

D20 v0.2 Usage Scenarios (Status Quo)

SW-Portal Working Draft 16 September 2004

This version:

<http://www.deri.at/research/projects/sw-portal/2004/d20/v0.2/20040916/>

Editors:

Kerstin Zimmermann

Authors:

Kerstin Zimmermann

This document is also available in non-normative [PDF](#) version.

Copyright © 2004 [DERI](#)®, All Rights Reserved. [DERI](#) liability, trademark, document use, and software licensing rules apply.

Table of contents

- [1. Introduction](#)
- [2. Usage Scenario I](#)
- [3. Usage Scenario II](#)
- [4. Usage Scenario III](#)
- [5. Conclusions & Future Work](#)
- [6. References](#)
- [Acknowledgement](#)

1. Introduction

After a fruitful discussion within the group we decided to focus on three Usage Scenarios. As not building them up from sketch we will enhance existing Portals with are related to Semantic Web. Depending on the number of community members different use cases might come up. We list the portals now from the smallest to the largest group and describe them in more detail in the following sections:

- I. the Semantic Web Portal Project Working Group <http://www.deri.at/research/projects/sw-portal/>
- II. the DERI international Homepage <http://www.deri.org/>
- III. the Semantic Web Community Portal <http://www.semanticweb.org/>

First we describe the status quo which is mainly based on information representation and dissemination with some aspect of communication.

2. Usage Scenario I

the Semantic Web Portal Project Working Group

The Portal of the Semantic Web Portal Project Working Group contains all necessary information for the members of the working group like the latest publications, deliverables and meeting dates. It also gives people from outside an impression what the working group is doing and provides details to get and stay in touch with the group.

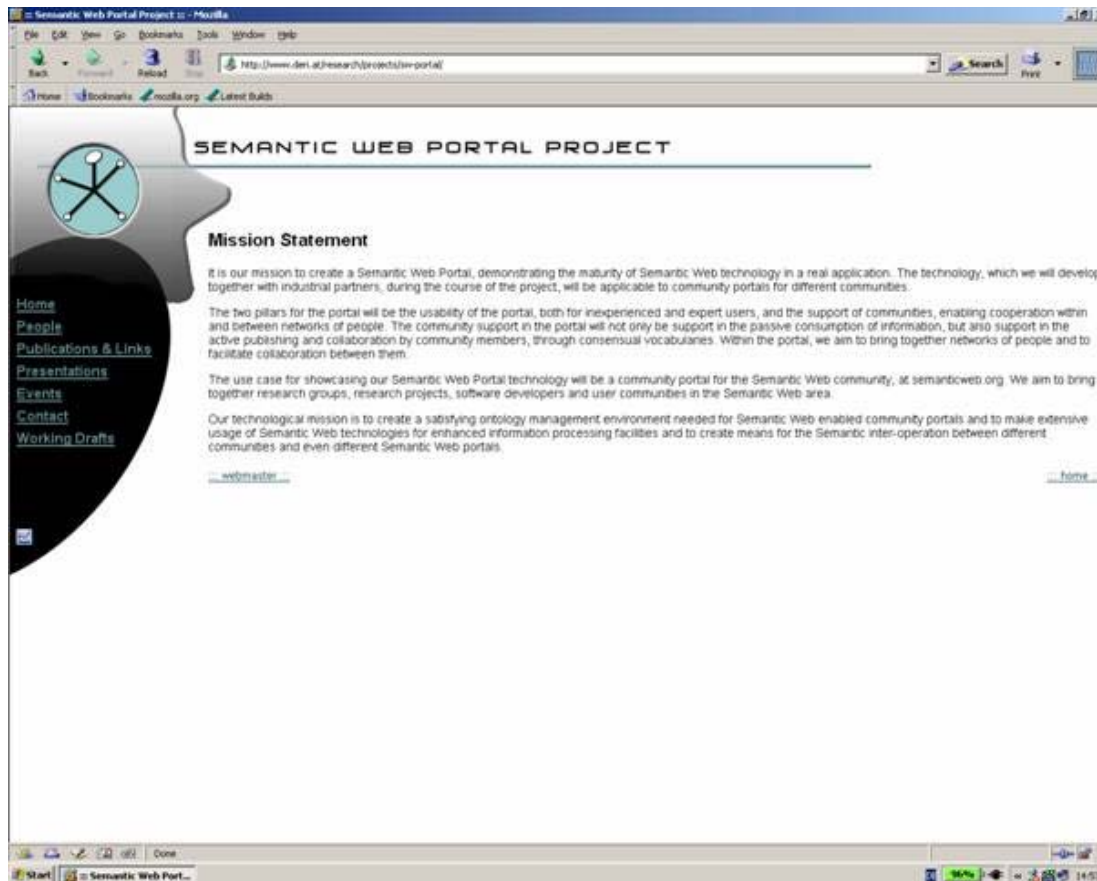


Figure 1: Screenshot of the Semantic Web Portal Project Start Page

Facts:

Number of people: listed members 21

Categories in the portal: 8

grouped in the left column: Home, People, Publications & Links, Presentation, Events, Contact, Working Drafts, Statistics

1 page per category, one layout except Statistics

In this small group everybody is knowing each other personally although two locations are involved. One webmaster is responsible for the pages. S/He has the only access rights to change the content. No creation date is given at the pages.

3. Usage Scenario II

In chapter 2 we outlined the features of the (information) portal of the Semantic Web Portal Project Working Group.

Now we go a step further and discuss

the DERI international Homepage

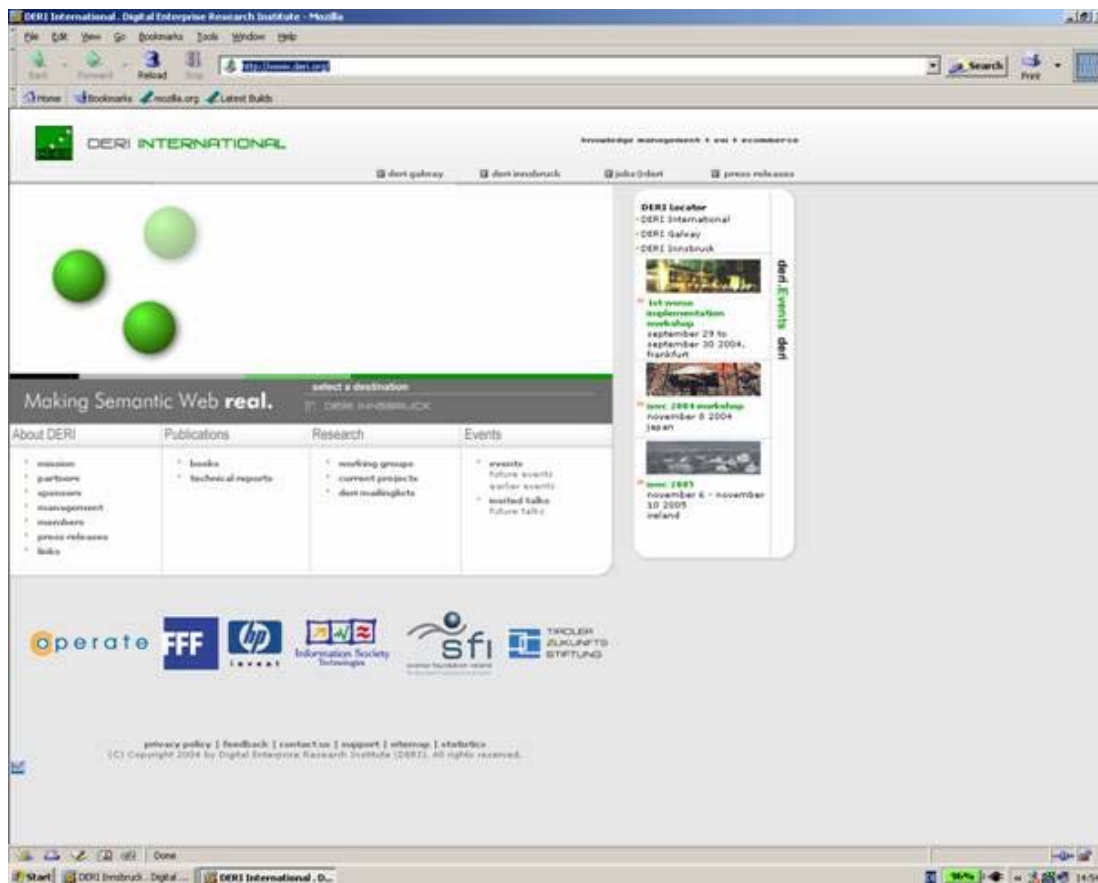


Figure 2: Screenshot of the DERI Start Page

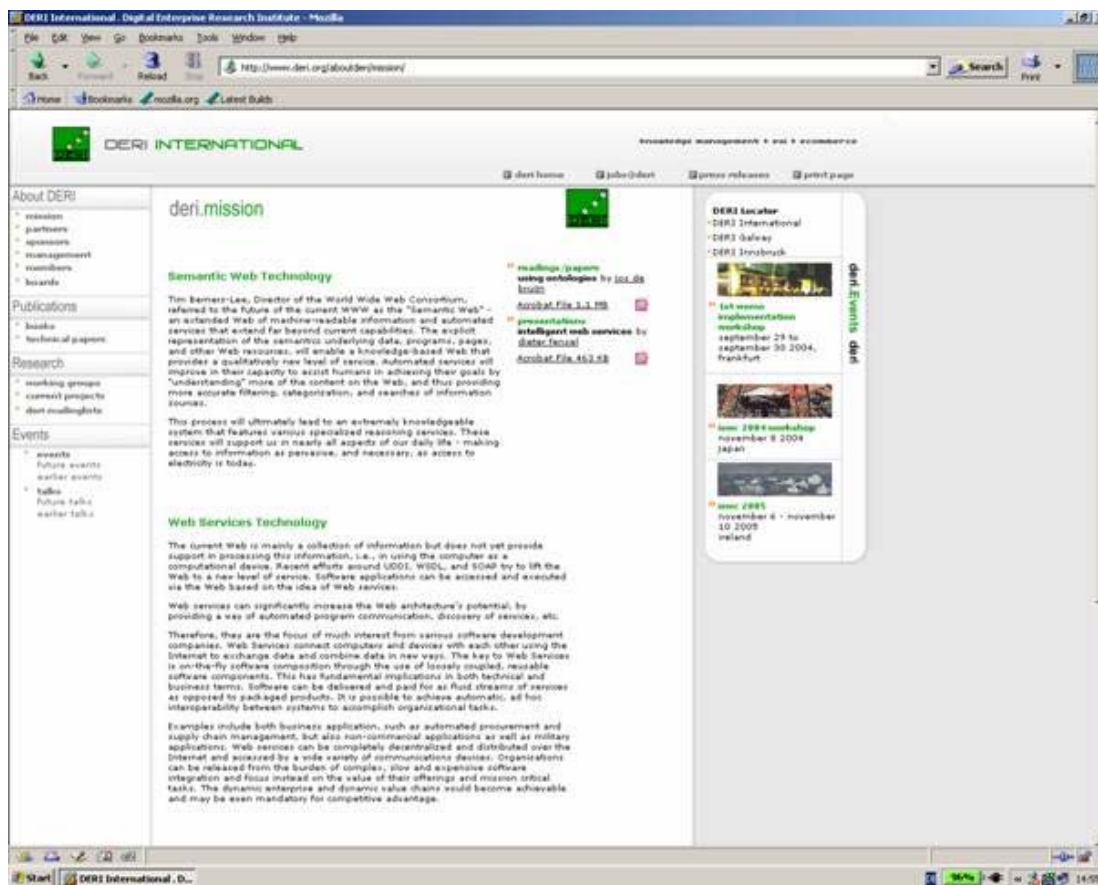


Figure 3: Screenshot of the DERI (Mission) Page

Facts:

Number of people: listed members 91

Categories in the portal: 23

a Starting page: only there entry Links, after that one layout except Statistics

grouped on the left side: Home, Mission, Partners, Sponsors, Management, Members, Board Links, Books, Technical Reports, Working Groups, Current Projects, Deri mailinglist, Events, Invited Talks
 grouped above: DERI Locator, Jobs, Press releases
 grouped at the bottom: Private Policy, Feedback, Contact us, Support, Sitemap, (Statistics)

DERI is a research institute based on two locations in two different countries. The portal promotes the results and provides further information for people getting in touch with DERI. The portal lists persons and organizations which are involved with DERI like partners, sponsors, and members. Publications, research projects, working groups and teaching by DERI are given as well. International conferences with people from DERI involved, e.g. as committee member, attendee, speaker, etc. are also mentioned.

One webmaster is responsible for the pages. He has the only access rights to change the content.

4. Usage Scenario III

the Semantic Web Community Portal

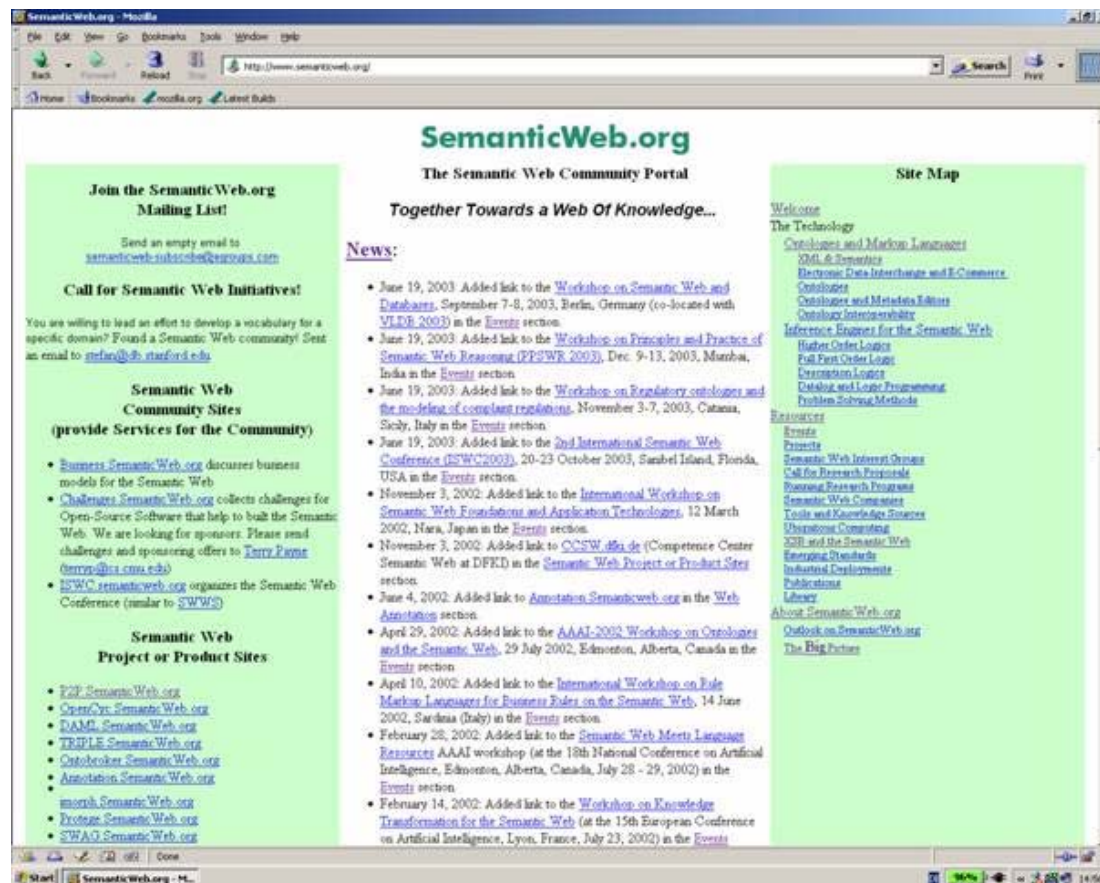


Figure 4: Screenshot of the Semantic Web Start Page



Figure 5: Screenshot of the Semantic Web (Welcome) Page

Facts:

Number of people: 1000 ? anonymous, open community

Categories in the portal: 14

Home

on the left side: Mailing list, Call for Initiatives, Community Sites, Project or Product Sites, Working Symposium, Web-Annotation, Examples of Standardization Efforts

in the middle: News

on the right side: Site Map, Welcome, Ontologies and Markup Languages, Inference Engines for the Semantic Web, Resources, About SemanticWeb.org

The Semantic Web Community Portal is a little bit confusing because of the arrangement. The separation between category and content is not quite clear because there is not 1 page per category. The ones listed on the left side of the start page only give link. In the middle you have only one category called News and the entries start right above there. On the right hand you find linked pages but in a different layout without the possibility of browsing through the other categories mentioned on the start page. The content is also not updated any longer and **page is frozen on 9-jun-03**. It started as a personal initiative of Stefan Decker who also owns the domain but obviously has given up to support it.

5. Conclusion & Future Work

In Chapter 2, 3 and 4 we analyzed the 3 portals in detail.

Up to know there are only static html pages: **No search function or ontology** is integrated at any of the sites. No personalization or login to internal space is possible.

6. References

[1] deBruijn, J. et. al: Requirement Analysis, D3v0.2; March 2004

<

http://www.deri.at/research/projects/sw-portal/papers/deliverables/D3swportal_requirements_v02.pdf

>

[3] Möller, K. et. al.: Portal Ontology, D1v1.0, August 2004

< http://www.deri.at/research/projects/sw-portal/papers/deliverables/D1_v1.0PortalOntology.pdf >

Acknowledgement

The editors would like to thank to all the members of the SW Portal working group for their advice and input to this document.



\$Date: 2004/08/02 21:55:41 \$

webmaster